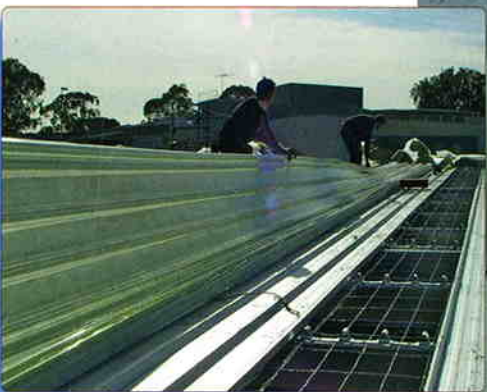


ClearSlide 405 and 700 mm cover to suit all roll formed steel deck sheeting.



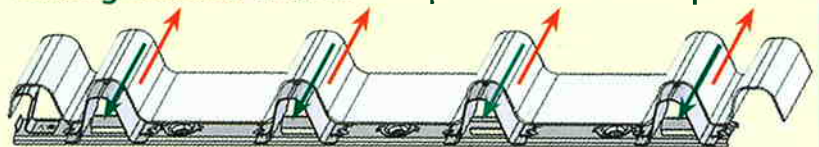
CLEARSLIDE

ROOFING SYSTEM TO EFFECTIVELY COMBINE FIBREGLASS AND ROLL FORM STEEL DECKING



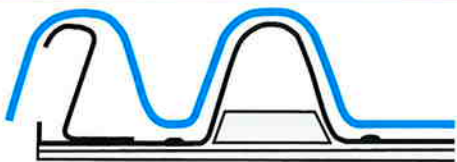
CLEARSLIDE

Sliding saddles enable independent sheet expansion



No pre-drilling of CLEARSLIDE Fibreglass sheet required

Patent Number 2002100864



UNIQUE CLEARSLIDE PROFILED FIBREGLASS SHEET PROVIDES SCREW FREE, LEAKPROOF SIDELAPS ON BOTH EDGES OF STEEL DECKING

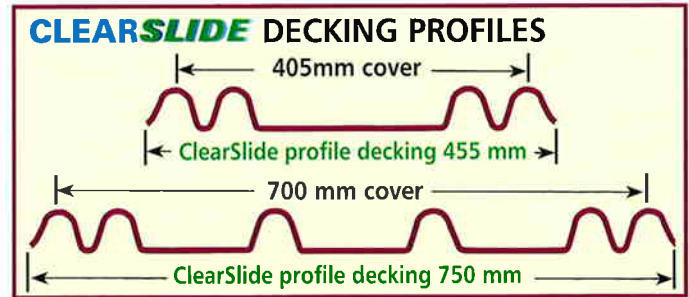
Faster, Easier, Installation with **CLEARSLIDE** unique profile fibreglass sheet and strip-clip system

The patented ClearSlide fixing clips provide many advantages over normal installation procedures, and also allow the combination of metal roll form decking and fibreglass skylighting over long lengths. No longer are two very different materials screwed together in the hope that they will interact, without water ingress, or cause buckling (ocean waving) of the fibreglass. The ClearSlide roof is watertight and aesthetically pleasing.

- ✓ Unique sliding saddle allows for the skylight expansion and contraction independently of the metal roof.
- ✓ No pre-drilling or over sizing holes in the fibreglass is necessary, thus reducing installation time.
- ✓ The pilot hole in the ridge ensures correct location of the Tek screw through the fibreglass and is shaped to prevent the screw slipping.
- ✓ The clip supports the fibreglass fully enabling minor maintenance traffic on the purlin.
- ✓ Support from the clip and the extra ribs within the profile allow for greater spanning capacity. Savings are possible through reduced costs with less purlins.
- ✓ Fibreglass is completely independent to the metal decking. This allows for long length sheets and eliminates the chances of water penetration.
- ✓ A finishing side clip supports and holds down the metal tray male rib which is left unsupported in a traditional system.
- ✓ Allows for longer length sheets eliminating some or all unsightly end lap joints.
- ✓ No protective purlin strip is required as the clip provides protection to the fibreglass from point loads over the safety mesh.
- ✓ Can be manufactured in Webglas, eliminating the need for safety mesh.
- ✓ The ClearSlide fibreglass profile will match all existing 700 decking profiles.
- ✓ This premium grade fibreglass sheeting is protected by the Wonderglas GC "gel coating" system, prolonging lifespan by in excess of 300% over standard fibreglass.

Other advantages

Expansion and contraction of the metal decking and fibreglass are independent of each other as the ClearSlide clip system 'floats' the fibreglass above the steel deck. The metal decking is not pierced at the side ribs.



CLEARSLIDE SPANNING 405 & 700		Normal fibreglass deck spanning	
SERIES		SERIES	
2400	2000 mm	2400	1400 mm
3050	2300 mm	3050	1700 mm
3660	2600 mm	3660	2000 mm

As the chart above shows, the ClearSlide profiled sheet is significantly stronger in terms of spanning capacity over a normal 400 and 700 deck profiles of the same sheet mass. Limit state testing as per AS4040.2: 1992, has been performed by Vipac Scientists and Engineers. Tests of ClearSlide are written in Report No. 360176 TST 3297 00 dated August 2004. Tests of 700 Decking are written in Report No. 360176 TST 2799 00 dated December 2003. Comparison of the two profiles reveals that ClearSlide outperforms 700 Deck fibreglass by an average of 71.55% for internal spans and 65.14 % for end spans

Physical Properties

Tensile Strength	80 MPa	Minimum requirement 50 MPa
Impact Strength	8 joules	
Shear Strength	90 MPa	
Modulus of Elasticity	5500 MPa	
Compressive Strength	135 MPa	
Flexural Strength	150 MPa	
Specific Gravity	1.6	
Water Absorption	0.2% in 24 hours/26°	
Curved Roof Radius, 2400 gsm	10.0 metres	
Recommended Service Temperature	-20° to +96°	



ClearSlide decking support ready to be crimped to deck.

Ampelite ClearSlide Decking is a special purpose variation of 'Wonderglas GC' sheeting with all its superior features.



✓ Light transmission is maintained.

The loss of light transmission after 10 years is just 10% compared to a loss of 30% for standard 20 micron surface film protected fibreglass sheeting. Wonderglas GC has a highly UV resistant gel coat of 100 microns.

✓ Very high resistance to yellowing and discolouration.

Over 10 years changes are negligible and are covered by warranty. Only minor changes may occur in later years.

✓ Surface erosion (fibre show) is eliminated.

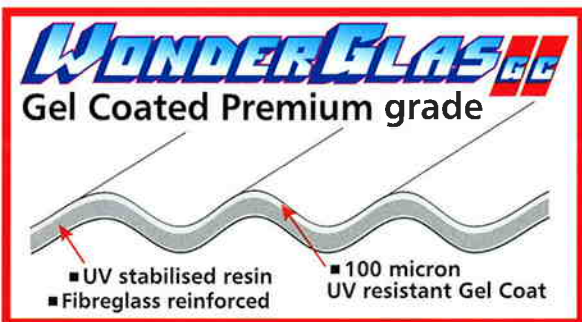
It is covered by warranty for 25 years.

✓ Low surface erosion.

This also improves weathering properties. The 100 micron gel coated surface provides an impenetrable barrier and the sheet is warranted against water penetration for 25 years. Inbuilt UV protection eliminates 99% of harmful UV rays.

✓ Cost effective over the life of the building.

Wonderglas GC with a Warranty of 25 years has a vastly superior life span, and most importantly, light transmission and appearance is maintained. Please refer to the Wonderglas GC brochure for detailed information.



The Wonderglas GC 100 micron thick gel coat provides unsurpassed performance. In comparison, surface film is just 20 microns.

CLEARSLIDE

LIGHT & HEAT TRANSMISSION

	<i>Light</i>	<i>Heat</i>
Ice Clear	74%	68%
Opal	72%	64%



700 ClearSlide



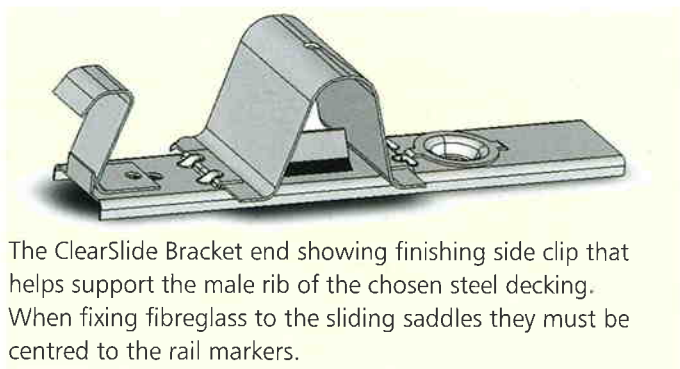
405 ClearSlide

Installation Pointers

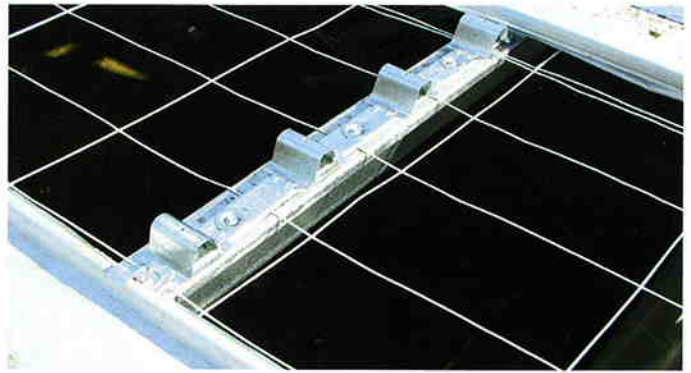
1. _____
Loose lay metal sheeting in skylight location as a template, as per normal roof practice, achieving correct 700mm cover skylight location.
2. _____
Remove steel roof sheet template.
3. _____
Slide ClearSlide clip into position on purlin, allowing the locating tab to touch male rib of the metal deck. (Note directional arrow on clip)
4. _____
Screw the clip into position using three roof Tek screws.
5. _____
Fix finishing side clip over the metal male rib and Tek screw in through slot provided on the ClearSlide clip.
6. _____
Using multi grips or pliers, crimp the finishing slide clip and steel male rib together.
7. _____
When fixing fibreglass ensure that the sliding saddle is centred to the rail markers.
8. _____
Lay Clearslide Wonderglas GC fibreglass over the installed ClearSlide brackets.
9. _____
Using a normal steel Tek screw fitted with a 32mm Weatherlok Washer, screw directly through the fibreglass into the pre-punched hole on the saddle.
10. _____
Continue screwing sheets into place until ClearSlide System is complete.

FIXINGS

ClearSlide Rail	10g x 25 mm Hex M
	12g x 35 mm Hex M
	12g x 45 mm Hex M
ClearSlide Saddle	12g x 35 mm Hex M



The ClearSlide Bracket end showing finishing side clip that helps support the male rib of the chosen steel decking. When fixing fibreglass to the sliding saddles they must be centred to the rail markers.



Specification for patented **CLEARSLIDE** Skylight System (Patent No. 2002100864)

"Skylights are to be Ampelite ClearSlide System comprising sliding saddle and Wonderglas GC six ridge fibre reinforced polyester panel with a 100 micron thick gel coat. The weight of the sheet shall be *(2400g/m²) in ** (Opal or Ice Clear) tint. The ClearSlide System is manufactured to conform with AS/NZS 4256 parts 1&3: 1994 and shall be installed in accordance with Ampelite fixing instructions in conjunction with AS1562.3: 2006, Design and installation of sheet roof and wall cladding Part 3: Plastic."

*Insert required sheet weight.
**Insert required sheet colour

Further information available from



AS/NZS ISO 9001
QEC 3787

Standards Australia

Ampelite Australia Pty Ltd ABN 91 487 122 629

Vic & Tas: Tel 03 9794 0977. Fax 03 9794 0710.

NSW & ACT: Tel 02 9625 7200. Fax 02 9625 7211.

Qld: Tel 07 3808 6211. Fax 07 3808 4799.

SA & NT: Tel 08 8260 7391. Fax 08 8260 7397.

WA: Tel 08 9302 6833. Fax 08 9302 6855.

NZ: Tel 09 634 5366. Fax 09 622 2060.

www.ampelite.com.au