

# AMPeLite

## Lexan\* Thermoclear\* multiwall sheet



Photo, Courtesy of Telstra Stadium, Sydney.



SABIC  
Innovative  
Plastics™

سابك  
sabic

**Lexan\***  
Polycarbonate sheet

Tough  
Virtually  
Unbreakable

\* Trademark of Sabic Innovative Plastics IP BV

Authorised Distributor: Ampelite Australia Pty Ltd.

[www.ampelite.com.au](http://www.ampelite.com.au)

## TRANSLUCENT THERMAL GLAZING WITH **Lexan\* Thermoclear\*** multiwall sheet

**Lexan\* Thermoclear\* multiwall sheet** is a high quality, low maintenance glazing material that is built to last. Based on Lexan polycarbonate resin, it delivers high impact strength, an excellent balance of low weight and high stiffness and naturally “water-clear” transparency.

From conservatories, commercial greenhouses and swimming pools, to industrial buildings, offices and sports stadiums, this versatile range of materials helps to deliver state-of-the-art, lightweight glazing for commercial, industrial and residential applications.

Ampelite stock 10 mm twinwall sheet which is widely used in small commercial and residential applications. In applications where superior stiffness is required, we can supply X-structures in gauges up to 32 mm thick.

**UV resistance** – Sabic’s proprietary surface treatment represents the next generation in surface coating technology. According to accelerated testing, Lexan\* Thermoclear\* sheet is superior to other available polycarbonate multiwall glazing products.

**Comprehensive warranty** – most Lexan\* Thermoclear\* products carry a minimum 10-year limited written warranty against excessive yellowing, loss of light transmission and loss of strength due to weathering.

**Excellent energy efficiency** – the multiwall construction traps air between the layers, which ensures outstanding thermal insulation performance.

**Two-sides UV protection** - all Lexan\* Thermoclear\* multiwall sheet supplied by Ampelite features Sabc’s proprietary UV protection to both sides, giving superior resistance to outdoor weathering and greater design flexibility.

**Ease of installation** – the flat structure of Lexan\* Thermoclear\* multiwall sheet allows the use of aluminium glazing bar systems for long-lasting performance. Unlike some multiwall glazing products, the sheet can be easily cut to length or width, allowing for variations between construction and design.

**Light weight** – an outstanding balance of low weight and high stiffness enables lightweight structures with greater spans to be designed and easily installed.

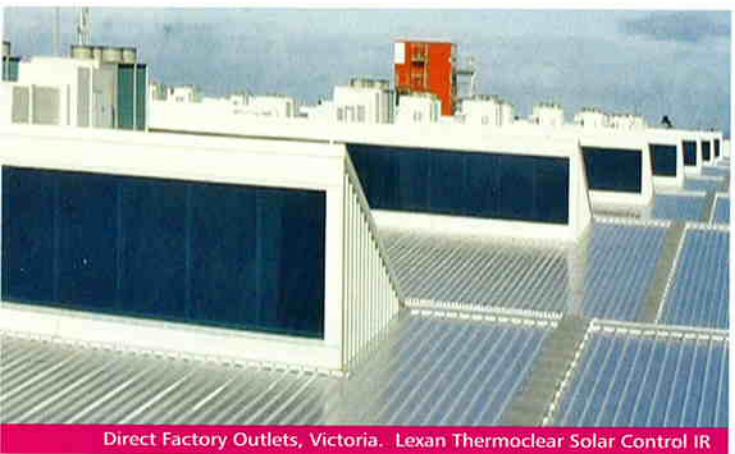
**Curved glazing** – sheet can be cold-formed into tight radii without pre-forming. Generally, the minimum radius is 175 x the gauge. Ampelite have specialised glazing systems for curved applications.



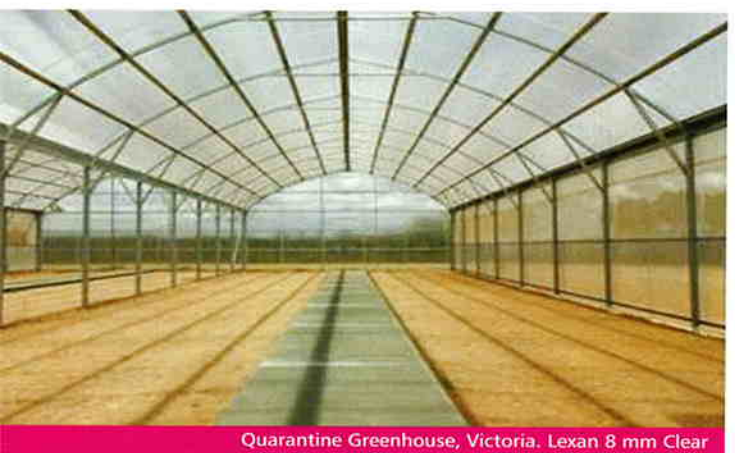
Residential pergola, Victoria. Lexan Thermoclear 10 mm opal



Girls Senior High School, Western Australia. Lexan Thermoclear 10 mm grey



Direct Factory Outlets, Victoria. Lexan Thermoclear Solar Control IR



Quarantine Greenhouse, Victoria. Lexan 8 mm Clear

Photo courtesy Redpath Ideal Greenhouses

# Innovative glazing solutions



## Typical applications

- Covered walkways
- Pergolas
- Shopping Centres
- Sports Complexes
- Swimming Pool Enclosures
- Industrial Glazing
- Greenhouses
- Screening/Partitioning

## Specification

"The translucent sheeting shall be 'Lexan\* Thermoclear\*\*' multiwall sheet as distributed by Ampelite Australia Pty Ltd. to comply with AS/NZS/ 4256 parts 1 & 3: 1994. The sheet shall have a gauge of \*10 mm and a width of \*\*1050 mm. The sheeting shall be fixed in accordance with Ampelite's \*\*\*H-Bar system. Both the sheeting and glazing bars will be supplied to conform with the nominated colour. Sheeting shall be installed in accordance with Ampelite fixing instructions and AS1562.3:2006 Design and installation of sheet roof and wall cladding Part 3: Plastic." \*Insert nominated gauge. \*\*Insert nominated width. \*\*\*Insert nominated glazing system.